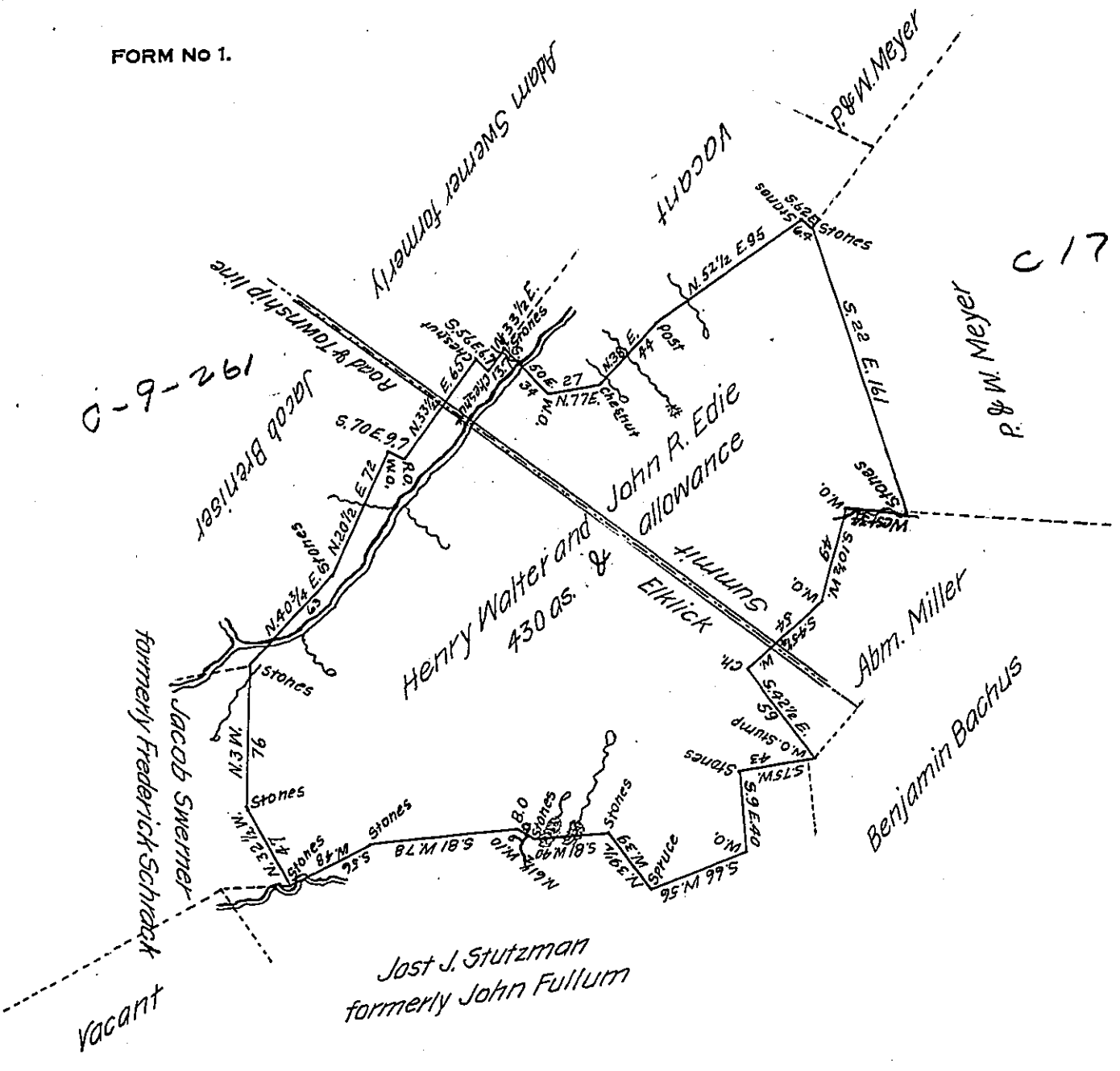


FORM NO 1.



C 17 - 215

Michael Fullum, Solomon Wiltout and Lydia Houghstetter, each claimants parts of this survey amounting in all to about one hundred acres.

Situate on the line between Elklick and Summit Townships in Somerset County containing four hundred and thirty acres and allowance and surveyed on the 28th, 29th & 30th days of May 1845 in pursuance of a Warrant granted to Henry Walter and John R. Edie bearing date the 5th day of May 1845.

P. H. L. Holbrook Deputy.

To John Laporte Esq. Surveyor General.

IN TESTIMONY that the above is a copy of the original remaining on file in the Department of Internal Affairs of Pennsylvania, made conformably to an Act of Assembly approved the 16th day of February, 1833, I have hereunto set my Hand and caused the Seal of said Department to be affixed at Harrisburg, this thirtieth day of July 1907.

Henry Hoover Secretary of Internal Affairs.